



Scan to watch
Installation video



Assembly & Instructions

For all KillerDock Slams

TOOLS NEEDED

- 7/16" wrench
- 9/16" wrench
- 9/16" socket wrench and ratchet
- 5/32" Allen wrench **(included)**
- 1/8" Allen wrench **(included, if needed)**
- Measuring tape
- 3/16" drill bit for Lags & 3/8" bit for Thru-Bolts
- Impact Driver (or regular Drill)
- Knife/blade (to cut shrink wrap and rope)
- #2 Phillips Screwdriver
- 8mm wrench

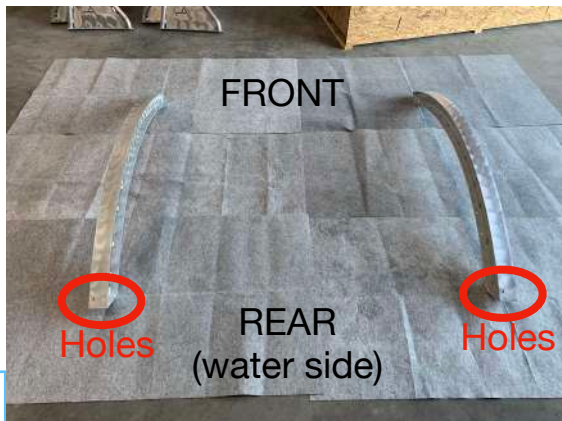
- Hammer (if mounting to concrete)
- Hammer drill and 3/8" concrete drill bit (if mounting to concrete) (& 1/4" concrete bit for drain pipe pad eyes)

Your items are protected by a specialized clear coating. Use caution to not scratch!

Use cardboard or similar item to help prevent scratching the coating.

Proposition 65 WARNING: This product can expose you to chemicals known to the state of California to cause cancer & birth defects or other reproductive harm.

Advertencia: Este producto puede exponerlo a sustancia químicas que el Estado de California reconoce como causantes de cancer y defectos de nacimiento u otros danos reproductivos.



1

Lay out Booms with top holes to the rear.



2

Lay out the six Ovals as shown.

Pull canvas back away from Ovals as you continue.



3

Using the provided hardware & Allen wrench, insert the bolt (one at a time) thru the boom holes.



4

Put a 1/4-20 nut into the hexagon nut pocket and align with bolt from the outside. Partially tighten, while holding the nut with your finger and then repeat on other side.

5

Repeat this for all ovals. You and a friend can work on both sides simultaneously.



3



6

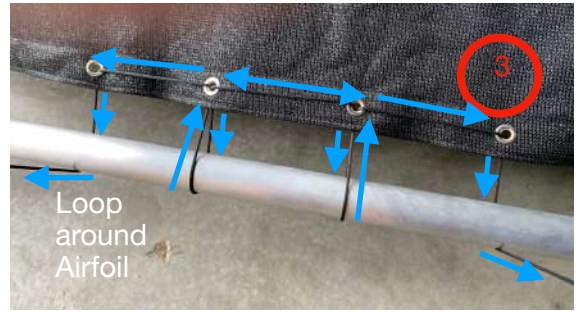
Once all ovals are tight, pull the grommet end of the canvas to the rear oval.



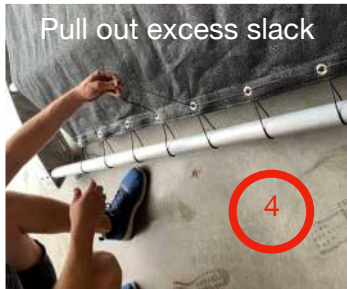
- Weave the rope through the canvas grommets and around the last oval using the following method. Do not over tighten.



Start by looping center of rope through center grommets



Continue this pattern throughout



Pull out excess slack



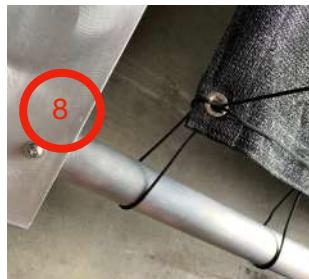
Tie a knot



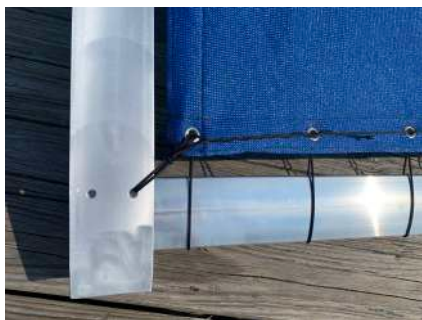
Use hole on one Boom to loop through twice and tie secure knot on grommet



Pull out all excess slack toward the other side



Repeat step 5 & 6 to complete the second side.



⚠ Caution! An overtightened canvas can potentially cause the width to narrow over time. ⚠
Cut off excess rope when complete.



7 -BRING IT ALL TOGETHER

- While a friend raises the rope/grommet end of the upper section, raise the top end of the Uprights to align where the bolt holes attach.
- Insert and hand tighten all eight 3/8" bolts/hardware.
- We recommend applying the anti-seize on the threads.
- Before tightening the 3/8" bolts, ensure that the upright and boom are generally parallel with each other.
- Ensure vinyl washers (not stainless steel) are touching the aluminum. There should be a vinyl washer on both sides for all of these bolts.
- After all are installed, tighten all bolts/nuts securely
- If you purchased a fish hanger, now is a great time to install it to the predrilled holes in the uprights.
- Next, lift the assembly from the front and position in to place.
- Once erect and in position, **bolt only one upright down using the provided mounting hardware.** You will bolt down the opposite/2nd upright once the channels and table top are assembled.
 - Pre Drill using 3/16" bit for lags, 3/8" for thru-bolts and 3/8" concrete bit for anchors.
- If you have the 90 degree base, ensure that you have a square dock edge. If the deck boards overhang, you can either notch/trim them or put a board against the stringer to build flush with edge of deck boards.



8 Connect Channels to Uprights

- Slide a Channel onto the inside of each Upright. Right/Right. Left/Left.
- First, hand tighten all of the hardware (front & top).
- Second, lift the channel & fully tighten the 2 top bolts.
- Third, fully tighten the 2 front bolts.
- Use this order when installing hardware. — — — — — >
- Soon, the Table Top will sit on and bolt to these Channels.



FRONT

TOP



9

If you purchased a drawer or a sink, now is the time to bolt them to the bottom of the table.

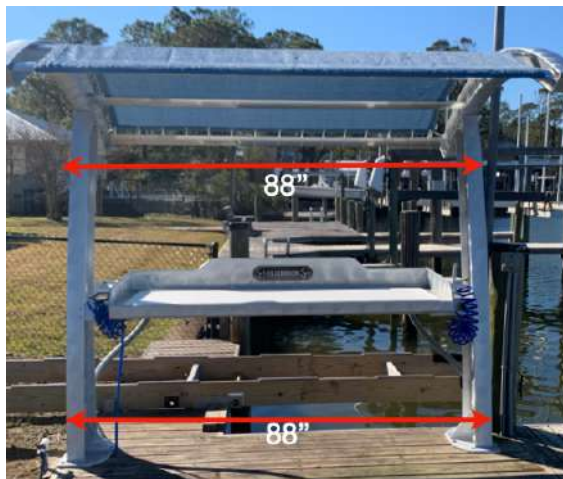
- Remove the plastic wing nuts from the bottom side of the table and discard them. Bolt your optional accessories to the table using the provided stainless hardware.
- When bolting the drawer to the table, first remove the starboard insert. Make sure the open end of the frame is facing the front of the table and secure to the bolts.
- When bolting the sink to the table make sure that you have it oriented correctly. There is a front and a back.



10

Once any and all accessories are bolted to the bottom of the table top, you are ready to install and bolt the table top to the channels.

- There are two plastic wing nuts on both the left and right side of the table. Remove and discard all four.
- With a helper, place the table on top of the channels and insert bolts into the table and channels. Start on the side of the station with the secured upright, remember one upright is still not secure. Once all four table bolts are in and tight, you may now secure the other upright.
- It is always a good idea to measure for squareness BEFORE securing the remaining upright. Measure in two places and make sure they are equal distance apart before bolting the station down for good. See example below.



With the table top and both uprights now secure, it is time to install your accessory trays.

- Each tray is labeled left and right and the hardware needed is already in each tray.
- Remove the bolts leaving the nuts in the pockets, line up the holes to the predrilled holes in the side splash and put the bolts back into the trays.
- Tighten firmly.
- The knife sharpener should be on the front side of the tray with the cup holder in the back.
- You may now install your hoses and nozzles



Light Kit Installation

- Your light kit will come with two clips that have stainless steel brackets attached to the bottom, see picture below. You will also have 1 or 2 (depending on the model) additional starboard clips. These clips will support the conduit to the airfoil.
- Attach the stainless bracket to the top of the light. The taller side of the clip is the front of the clip. See image below. Once in place snap the starboard opening to the oval.
- If you purchased the fish hanger, wrap the electrical whip assembly over the hanger as shown in the image below. Now snap the remaining starboard clip(s) to the conduit first and then to 3rd oval from the back.
- Using the provided hardware, bolt the, conduit support, switch box and junction box to the predrilled holes in the upright.



ALUMINUM PIPE DRAIN



- Unwrap the drain pipes.
- Partially loosen the top set screw using the provided 1/8" Allen wrench.



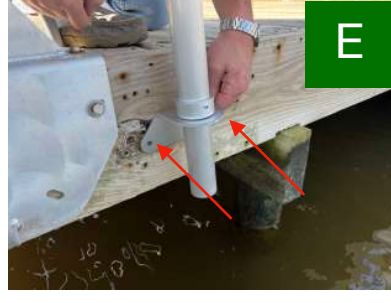
- Slide the pad eye onto the drain pipe and up to the aluminum ring.



- One person hold while another steps back to determine desired angle & position of the drain pipe.



- Tighten the set screw at the top.



- Hold the pad eye in place, and mark the 2 holes. Pre-drill the holes for the bolts.
 - 3/16" for lag bolts.
 - 1/4" for anchors.



- Secure pad eye with provided hardware.



- The lower ring with set screw can be adjusted as needed, and ensures that the drain pipe doesn't slide down.



HOLD HARMLESS

Purchaser agrees to defend KillerDock, Inc., its agents, directors, officers and employees, at Purchaser's sole expense, and will indemnify and hold harmless KillerDock, Inc., its agents, directors, officers and employees, from and against any and all product liability losses, costs, damages, fees or expenses arising out or in connection with Purchaser and/or any of its family, guests, customers, affiliates or sublicensees possession, installation, use, or sale of any KillerDock, Inc. Product, including, but not limited to, any actual or alleged personal injury, property damage, death or other consequence occurring to any person or entity as a result, directly or indirectly, of the possession, installation, use, or sale of any KillerDock, Inc. Product, whether claimed by reason of breach of warranty, negligence, wantonness, product defect, or otherwise, and regardless of the form in which any such claim is made.

RETURN POLICY

We trust that you'll be thrilled with your purchase, but in the unlikely event of an issue with your product, contact us within 7 days so that we can either fix or replace your product. If the product is damaged during shipping, take pictures of the packaging and contents immediately so that we can follow the necessary steps for resolution. We offer a limited lifetime warranty covering any manufacturing defects.

PRIVACY POLICY

We don't share any of your personal information with anyone. When you order products, we or our third-party payment processor will collect payment, shipping and billing information in order to process the transaction. We may post or share social media of our products that may include our products after being installed, and possibly include your name, profile, or image. If you refuse this, please let us know and we will refrain from including images of you or your products.